

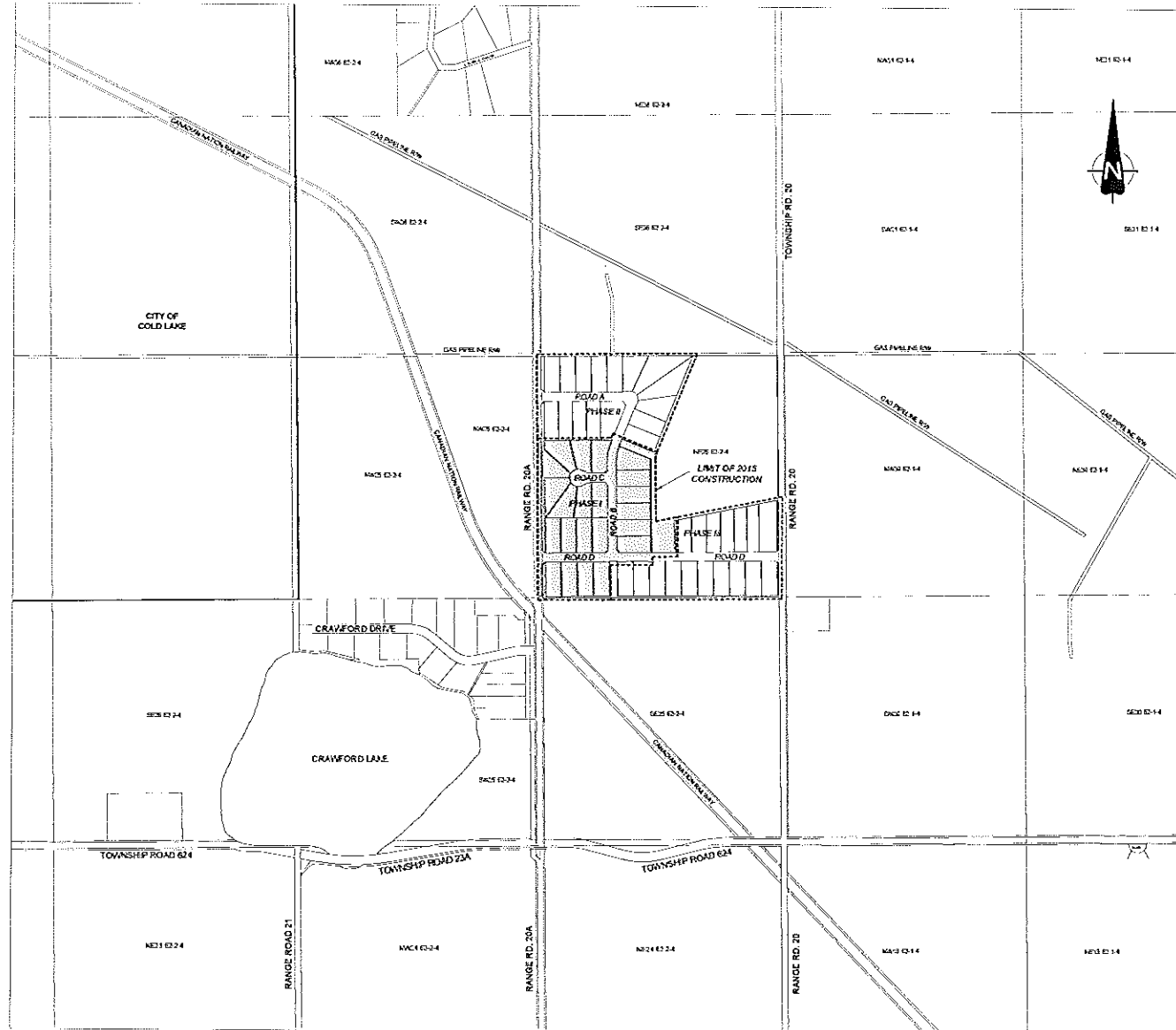
1416832 ALBERTA LTD.

MD OF BONNYVILLE, ALBERTA

FAIRWAY ESTATES PHASE I

PROJECT NO. MDSD - 0001

ISSUED FOR REVIEW



LOCATION PLAN
N.T.S.

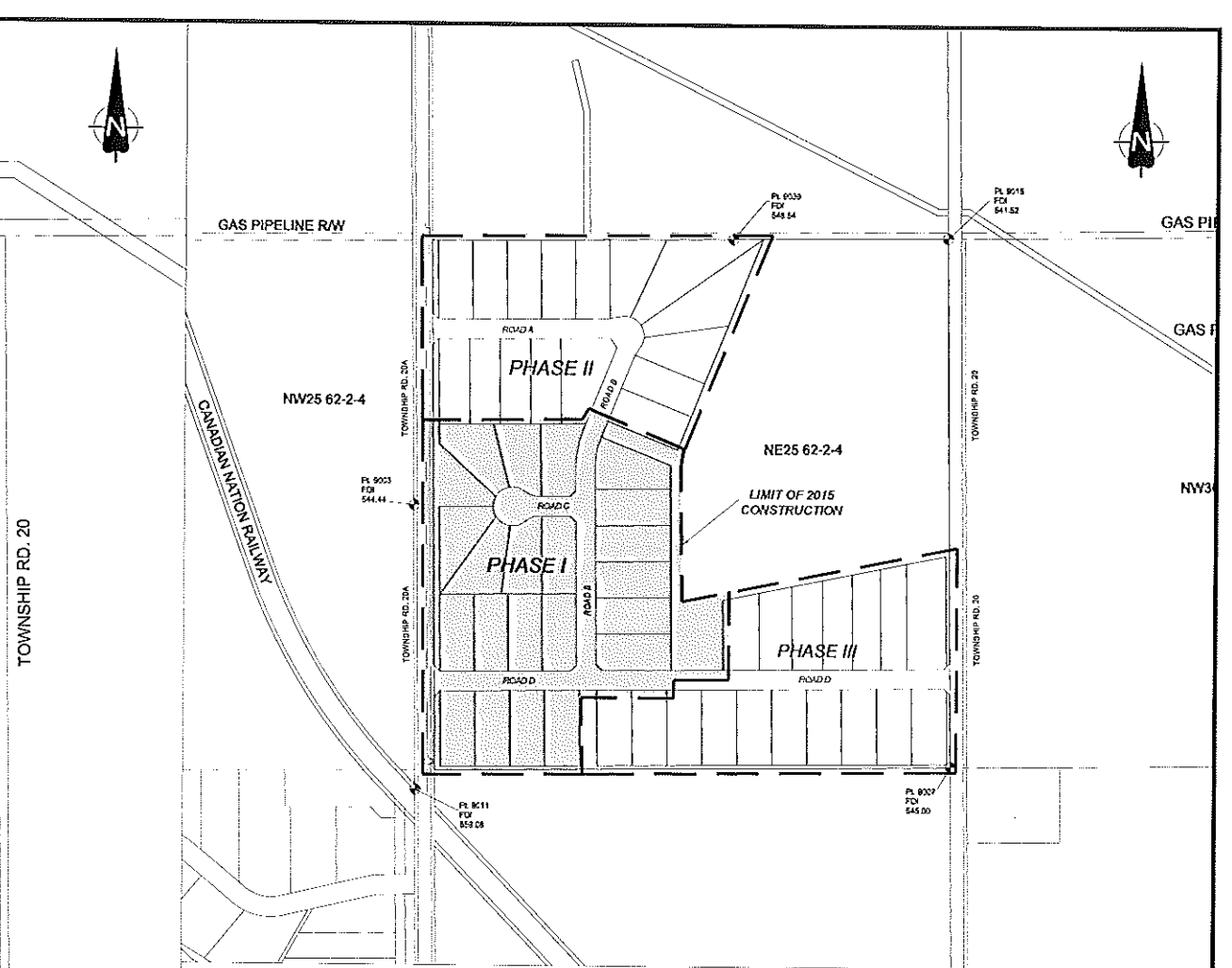
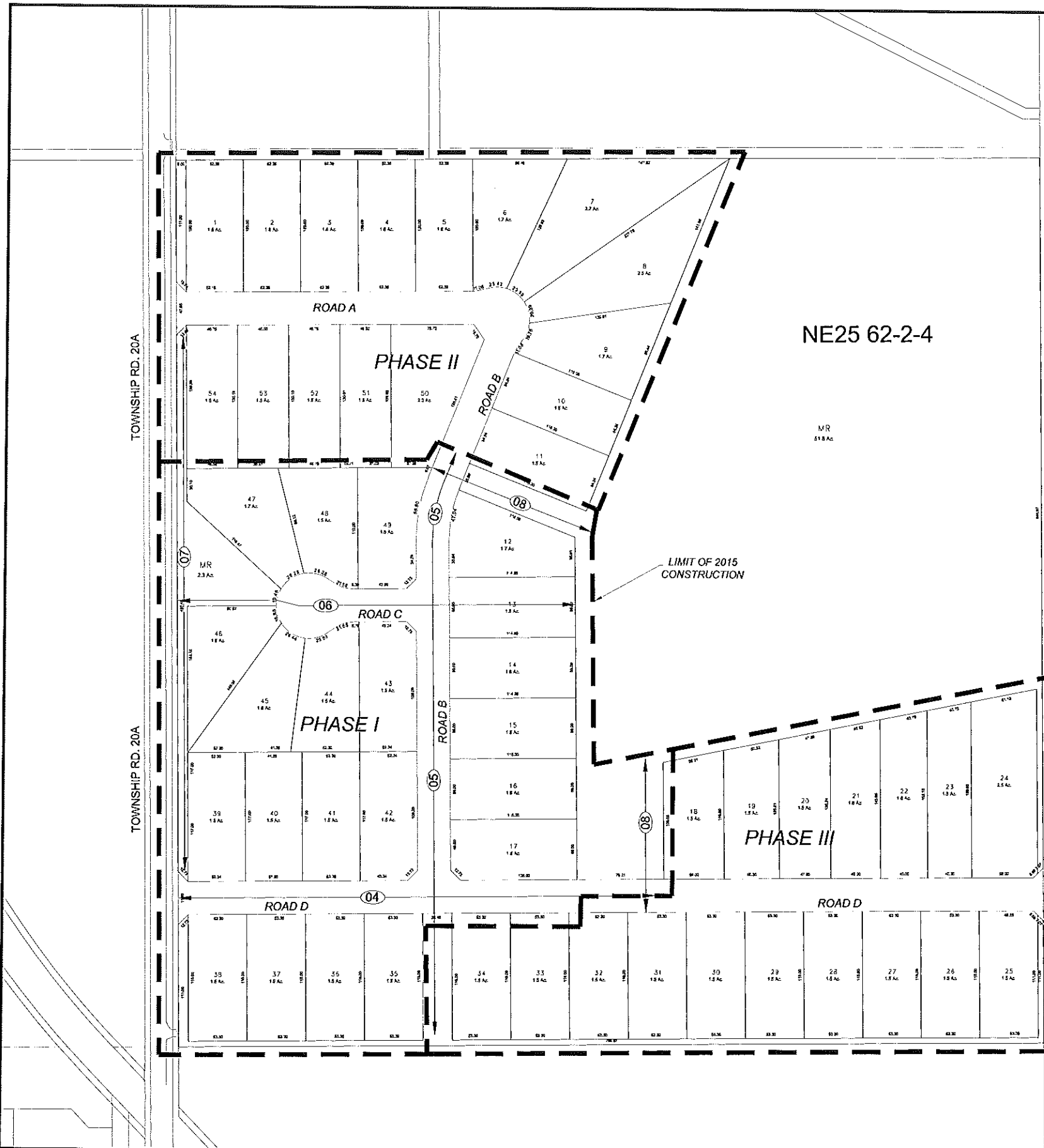
LIST OF DRAWINGS

- | | |
|---------|--|
| DWG. 01 | TENTATIVE PLAN AND DRAWING INDEX |
| DWG. 02 | OVERALL PLAN AND TOPOGRAPHY |
| DWG. 03 | LOT GRADING PLAN |
| | TOWNSHIP ROAD 20A INTERSECTION TIE-IN |
| DWG. 04 | ROAD D PLAN PROFILE - STN 0+000 TO 0+500 |
| DWG. 05 | ROAD B PLAN PROFILE - STN 0+150 TO 0+675 |
| DWG. 06 | ROAD C PLAN PROFILE - STN 0+000 TO 0+400 |
| DWG. 07 | TOWNSHIP ROAD DRAINAGE DITCH PLAN PROFILE - STN 0+025 TO 0+700 |
| DWG. 08 | NORTH DRAINAGE DITCH PLAN PROFILE - STN 0+000 TO 0+225 |
| | SOUTH DRAINAGE DITCH PLAN PROFILE - STN 0+000 TO 0+175 |
| DWG. 09 | SECTIONS AND DETAILS |

SE DESIGN AND CONSULTING INC.

715 LANESHORE DRIVE
COLD LAKE, ALBERTA
T9A 0C4

PH (780) 594-5330
FAX (780) 584-4155
www.secd.ca



SITE BENCHMARK ELEVATIONS
SCALE 1:5000

CONTROL POINT TABLE				
Point Number	Description	Elevation (m)	Northing (m)	Easting (m)
9003	TD	544.44	E028608.550	54029.038
9011	FD	559.03	E029216.709	54850.522
9507	FD	545.00	E029176.634	54034.061
9015	FD	541.52	E030019.857	54840.948
9039	FD	546.54	E030016.592	54514.048

GENERAL NOTES

1. THE LOCATION AND PROTECTION OF ALL UTILITIES SHALL BE THE SOLE RESPONSIBILITY OF THE CONTRACTOR WHETHER THE UTILITY IS SHOWN ON THE DRAWINGS OR NOT. THE LOCATION OF THE UTILITIES SHOWN ON THE DRAWINGS ARE APPROXIMATE ONLY. ALBERTA 911 CALL SHALL BE CONTACTED AT 1-800-242-3647 AND ARRANGEMENTS MADE FOR LOCATIONS PRIOR TO ANY EXCAVATION.
2. ALL CONSTRUCTION TO MEET OR EXCEED MD OF BONNYVILLE SUBDIVISION SPECIFICATIONS AND STANDARDS.
3. FINAL LOCATIONS OF APPROACHES TO BE ADJUSTED IN THE FIELD TO SUIT GRADES AND ACCESS.
4. ALL CULVERT ROAD CROSSINGS TO BE R/C RAPPAED.
5. ALL DITCHES TO BE TOPSOILED AND SPUNLED NORTH AMERICAN GREEN SC160 EROSION CONTROL FABRICS TO BE INSTALLED WHERE DITCHES EXCEED 2.0%.
6. FLEX GORDBE BARRIERS TO BE INSTALLED AT MAXIMUM 15M INTERVALS WHERE DITCHES EXCEED 2.0%.
7. ALL ELEVATIONS ARE TO NAD 83 31M GEODETIC DATUM.

LEGEND
 - PROFILE VIEW PAGE NUMBER

PERMIT TO PRACTICE
 SE DESIGN AND CONSULTING INC.
 Date: _____
 PERMIT NUMBER: P 8875
 The Association of Professional Engineers,
 Geologists and Geophysicists of Alberta

NO.	DATE	DESCRIPTION	BY	APP.
01	02-23-2015	ISSUED FOR REVIEW	JTH	
REVISIONS				

SCALE
 1:2000
 DESIGNED BY
 DKT
 CHECKED BY
 JTH

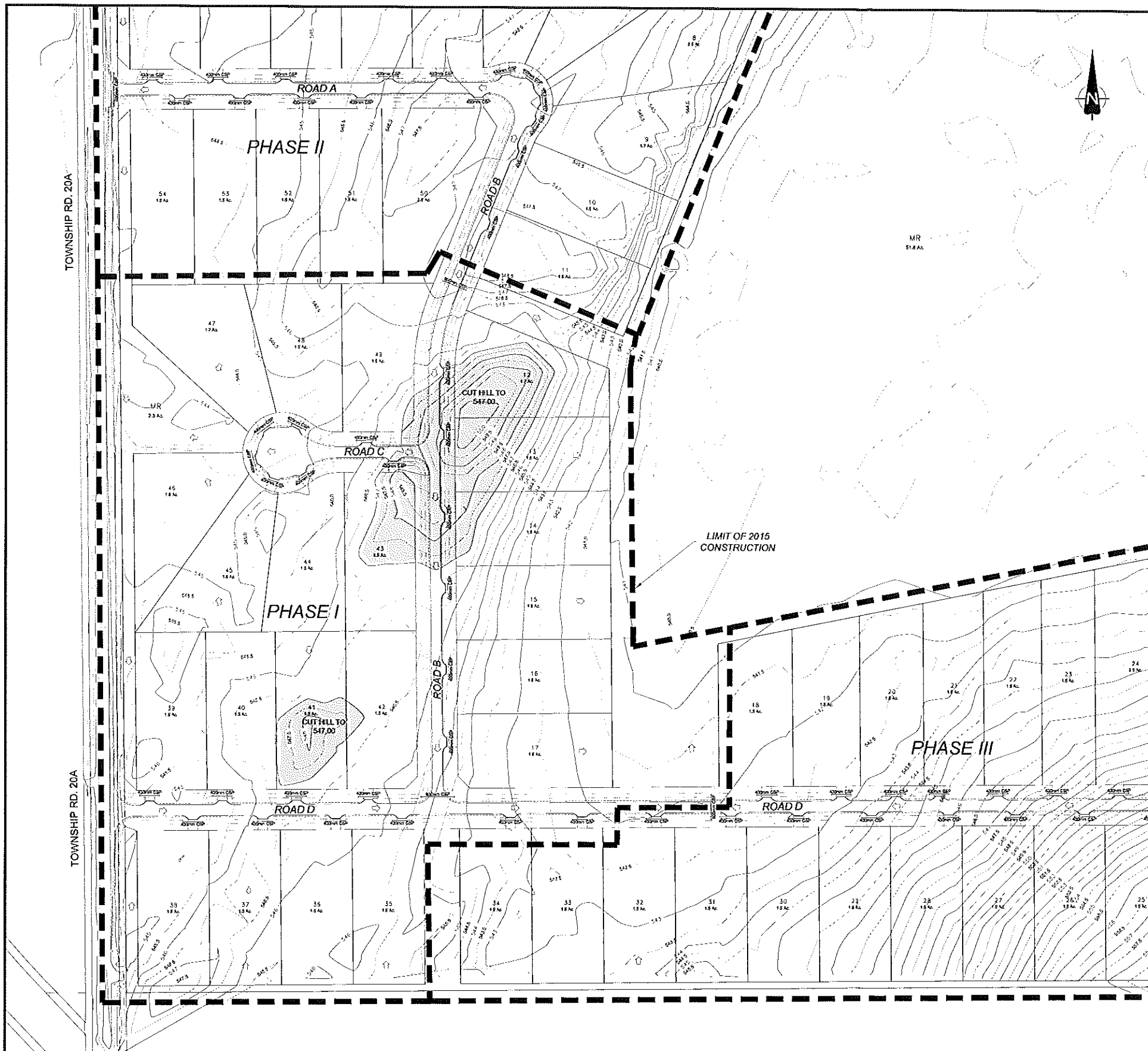
PROJECT No.
 MOSD-0001
 DRAWN BY
 DKT
 DATE
 APRIL 16, 2015

SE DESIGN AND CONSULTING INC.

713 LAKESHORE DRIVE
 GOLD LAKE, ALBERTA
 T0M 0C4
 PH: (780) 594-5300
 FAX: (780) 544-4458
 www.se-design.ca

1416832 ALBERTA LTD.
 FAIRWAY ESTATES
 PHASE I

TENTATIVE PLAN AND DRAWING INDEX



GENERAL NOTES

1. THE LOCATION AND PROTECTION OF ALL UTILITIES SHALL BE THE SOLE RESPONSIBILITY OF THE CONTRACTOR WHETHER THE UTILITY IS SHOWN ON THE DRAWINGS OR NOT. THE LOCATION OF THE UTILITIES SHOWN ON THE DRAWINGS ARE APPROXIMATE ONLY. ALBERTA 911 CALL SHALL BE CONTACTED AT 1-800-242-3447 AND ARRANGEMENTS MADE FOR LOCATIONS PRIOR TO ANY EXCAVATION.
2. ALL CONSTRUCTION TO MEET OR EXCEED MD OF BOWENVILLE SUBDIVISION SPECIFICATIONS AND STANDARDS.
3. FINAL LOCATIONS OF APPROACHES TO BE ADJUSTED IN THE FIELD TO SUIT GRADES AND ACCESS.
4. ALL CULVERT ROAD CROSSINGS TO BE IRP BARRED.
5. ALL DITCHES TO BE TOPSOILED AND SEEDED NORTH AMERICAN GREEN SCISSOR PROSOY CONTROL FABRICS TO BE INSTALLED WHERE DITCHES EXCEED 2.0%.
6. NEXX GEORGE BARRIERS TO BE INSTALLED AT MAXIMUM 15M INTERVALS WHERE DITCHES EXCEED 2.0%.
7. ALL ELEVATIONS ARE TO NAD 83 3TM GEODETIC DATUM.

LEGEND

Corrugated Steel Pipe	PROPOSED 400mm CSP
Edge of Subgrade	-----
Bottom of Ditch

PERMIT TO PRACTICE
 SE DESIGN AND CONSULTING INC.
 Signature _____
 Date _____
PERMIT NUMBER: P 8875
 The Association of Professional Engineers
 Geologists and Geophysicists of Alberta

NO.	DATE	DESCRIPTION	BY	APP.
01	02-23-2015	ISSUED FOR REVIEW	JTH	
REVISIONS				

SCALE HOR. 1:1500	PROJECT No. MDS0-0001
DESIGNED BY DKT	DRAWN BY DKT
CHECKED BY JTH	DATE APRIL 16, 2015

SE DESIGN AND CONSULTING INC.

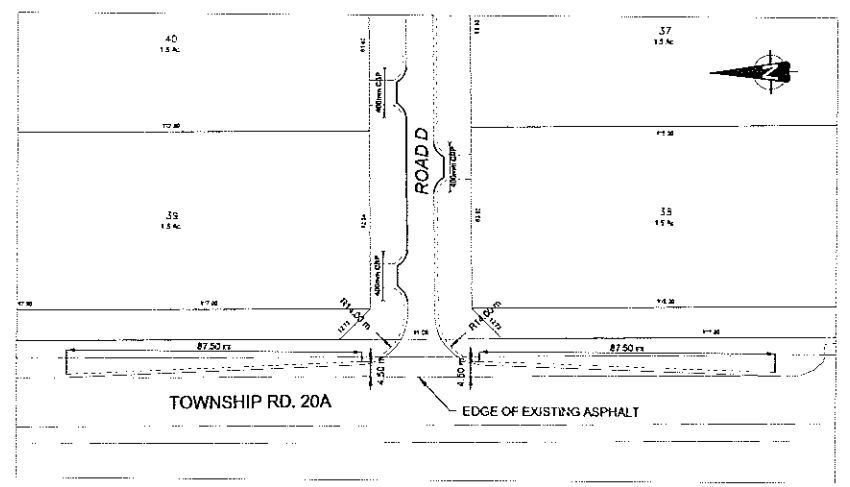
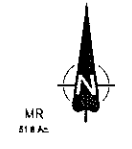
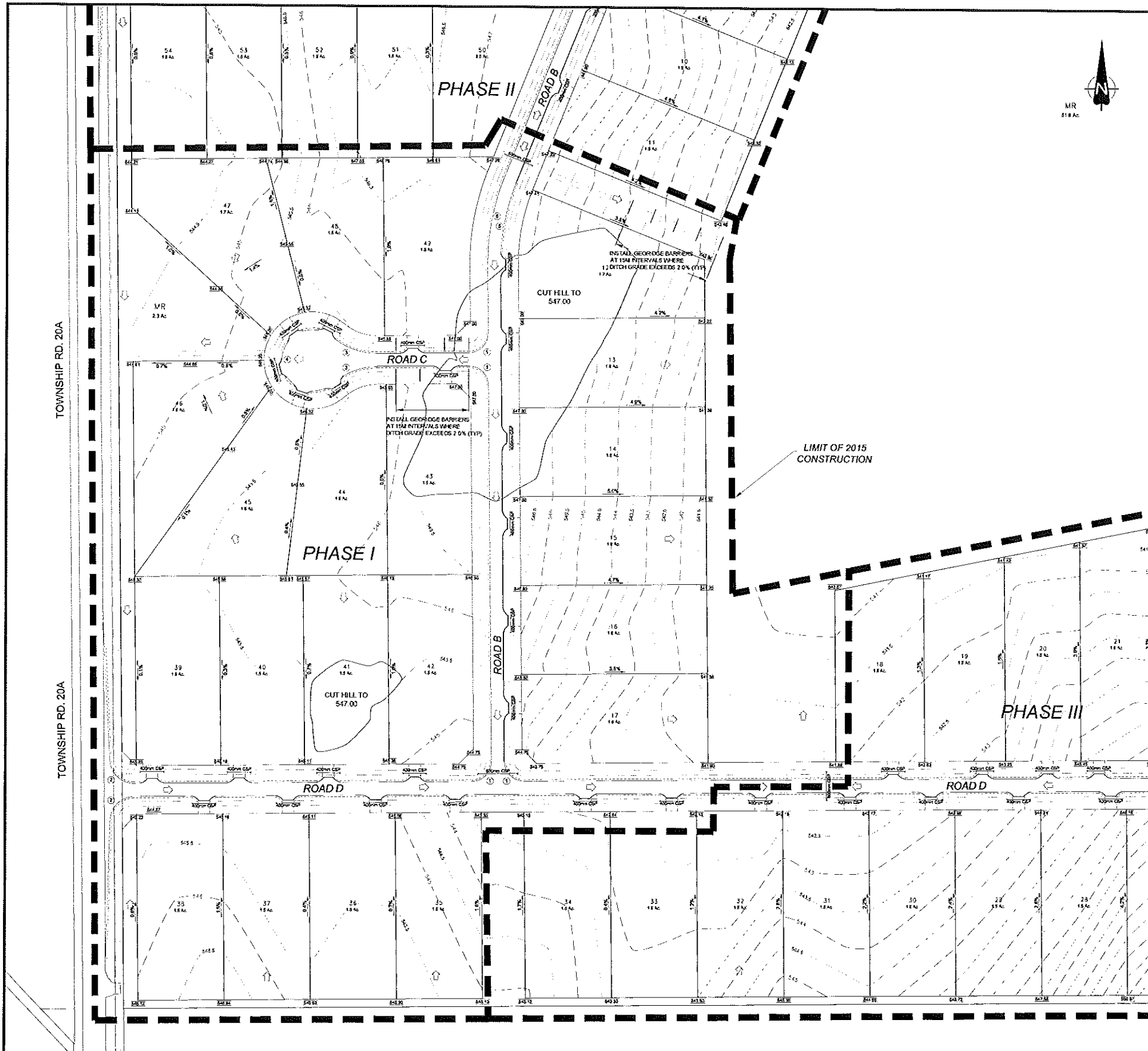
713 LAKESHORE DRIVE
COLD LAKE, ALBERTA
T9M 0C4

PH. (780) 564-5393
FAX. (780) 564-4466
www.seesign.ca

1416832 ALBERTA LTD.
FAIRWAY ESTATES
 PHASE I

OVERALL PLAN AND TOPOGRAPHY

SHEET **2** OF **09** DWG. No. **02**



TOWNSHIP RD. 20A INTERSECTION TIE-IN
SCALE 1:1000

SUBGRADE RADIUS - CURVE TABLE		
CURVE NUMBER	LENGTH (m)	RADIUS (m)
1	17.28	11.0
2	19.56	14.0
3	26.91	40.0
4	91.74	70.0
5	44.14	132.0
6	54.85	140.0

- GENERAL NOTES
- THE LOCATION AND PROTECTION OF ALL UTILITIES SHALL BE THE SOLE RESPONSIBILITY OF THE CONTRACTOR WHETHER THE UTILITY IS SHOWN ON THE DRAWINGS OR NOT. THE LOCATION OF THE UTILITIES SHOWN ON THE DRAWINGS ARE APPROXIMATE ONLY. ALBERTA 181 CALL SHALL BE CONTACTED AT 1-800-242-3447 AND ARRANGEMENTS MADE FOR LOCATIONS PRIOR TO ANY EXCAVATION.
 - ALL CONSTRUCTION TO MEET OR EXCEED MD OR BOLIVIA/LE SUBDIVISION SPECIFICATIONS AND STANDARDS.
 - FINAL LOCATIONS OF APPROACHES TO BE ADJUSTED IN THE FIELD TO SUIT GRADES AND ACCESS.
 - ALL ELEVATIONS ARE TO NAD 83 3TM GEODIC DATUM.

LEGEND	
Design Grade	545.00
Corrugated Steel Pipe	400mm CSP
Edge of Subgrade	---
Bottom of Ditch	---
Subgrade Radius Marker	(1)

PERMIT TO PRACTICE
SE DESIGN AND CONSULTING INC.
SIGNED:
Date:
PERMIT NUMBER: P 8875
The Association of Professional Engineers
Geologists and Geotechnical Engineers of Alberta

NO.	DATE	DESCRIPTION	BY	APP.
01	02-23-2015	ISSUED FOR REVIEW	JTH	
REVISIONS				

SCALE	PROJECT No.
HOR. 1:1750	MDS0-0001
DESIGNED BY	DRAWN BY
DKT	DKT
CHECKED BY	DATE
JTH	APRIL 16, 2015

SE DESIGN AND CONSULTING INC.

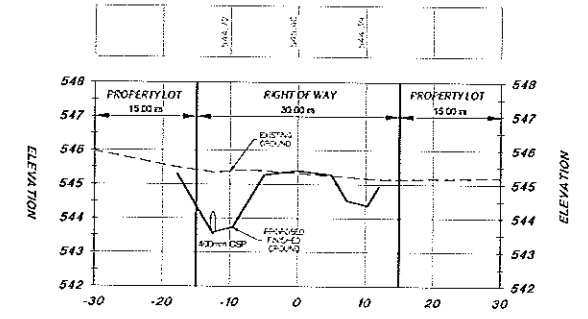
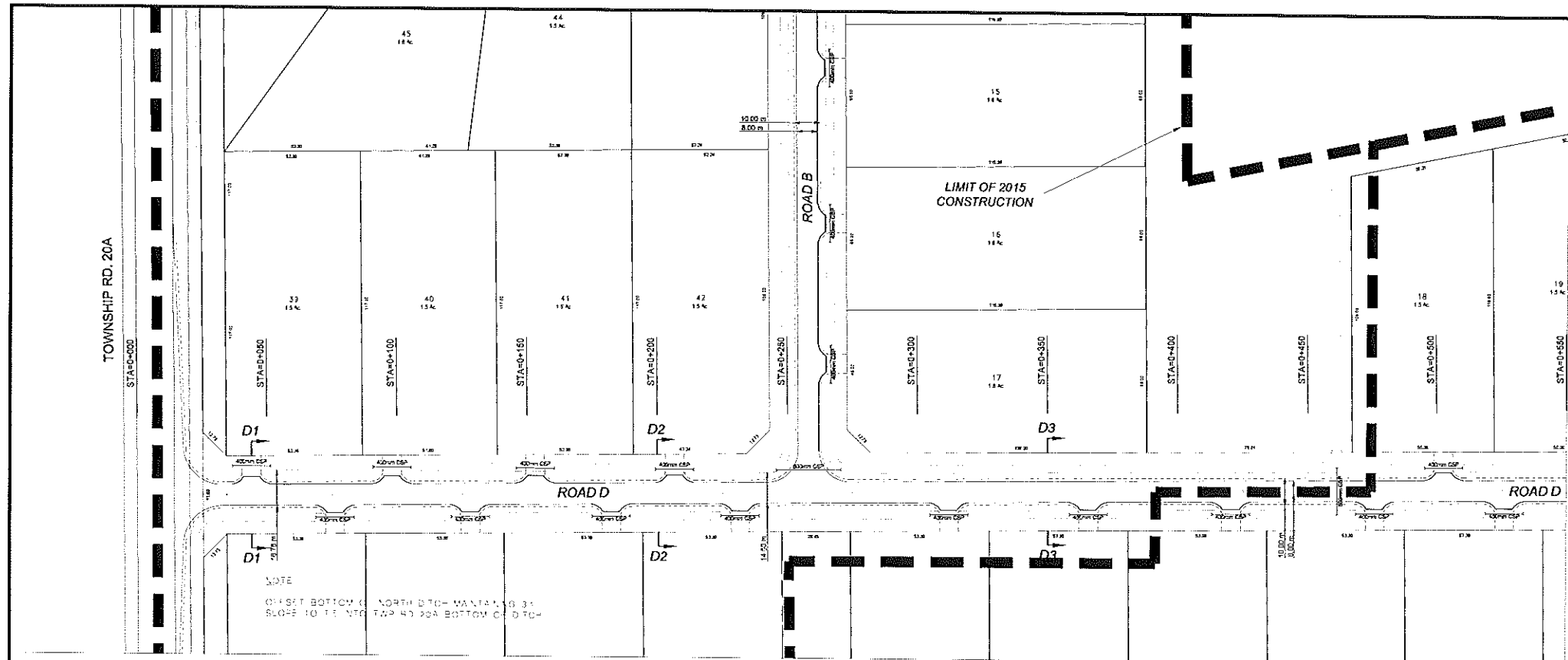
713 LAKESHORE DRIVE
COLD LAKE, ALBERTA
T9M 0C4

PH (780) 594-5390
FAX (780) 594-4456
www.secdesign.ca

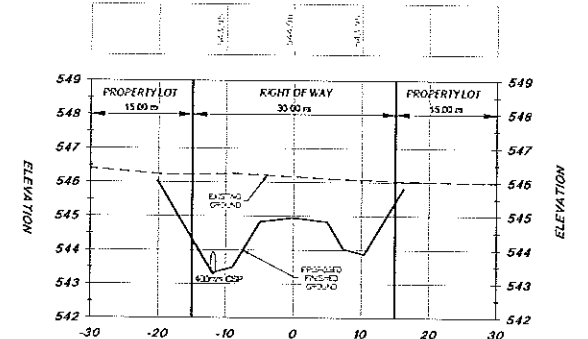
1416832 ALBERTA LTD.
FAIRWAY ESTATES
PHASE I

LOT GRADING
TOWNSHIP RD. 20A INTERSECTION TIE-IN

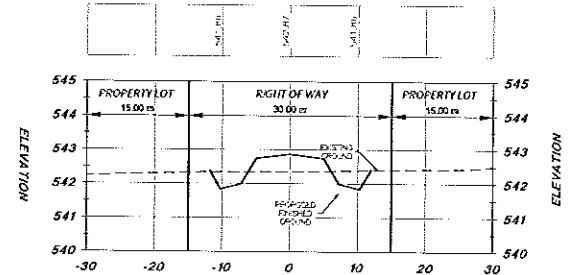
SHEET 3 OF 09 DWG. No. 03



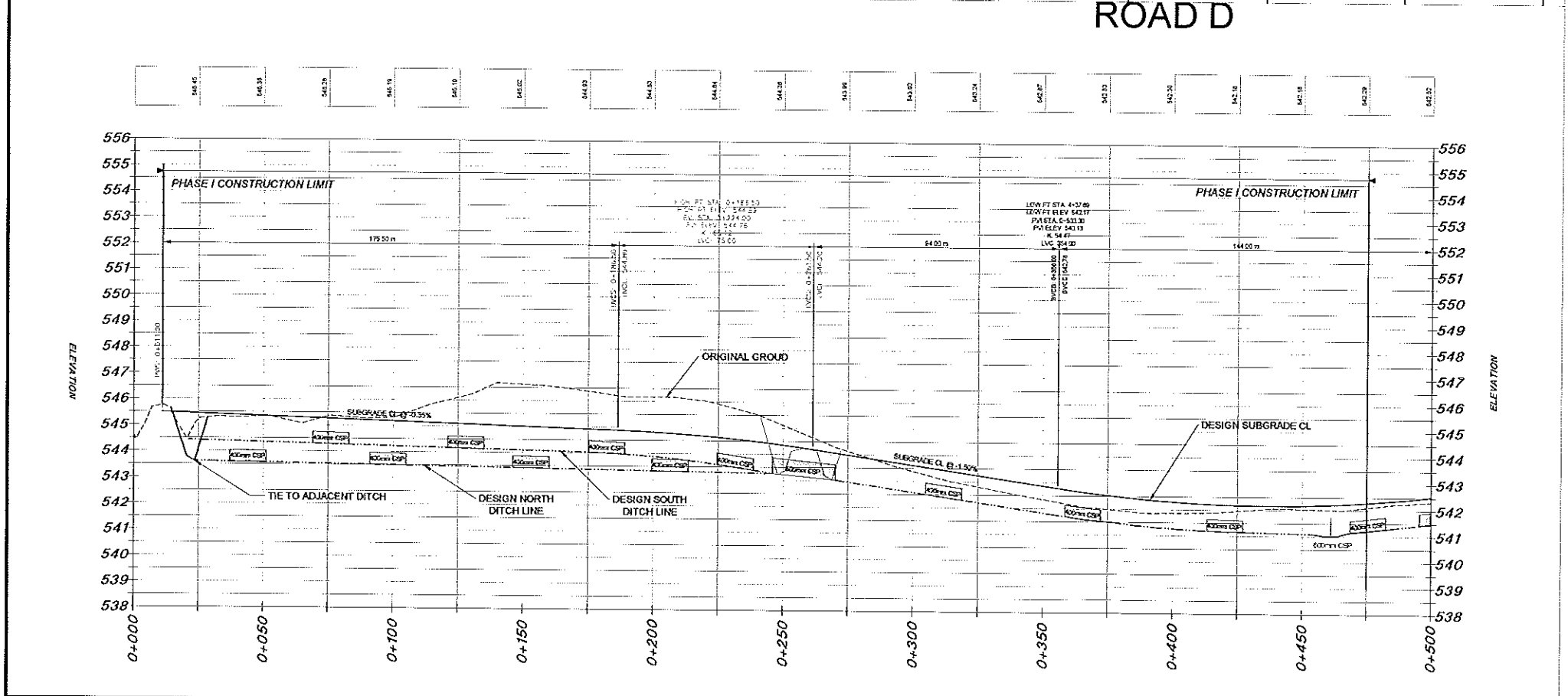
SECTION D1 - D1 STN 0+045
HOR. 1:500
VER. 1:50



SECTION D2 - D2 STN 0+200
HOR. 1:500
VER. 1:50



SECTION D3 - D3 STN 0+350
HOR. 1:500
VER. 1:50



LEGEND

- PROPOSED
- Corrugated Steel Pipe
- Edge of Subgrade
- Bottom of Ditch

PERMIT TO PRACTICE
SE DESIGN AND CONSULTING INC.
Signature: _____
Date: _____
PERMIT NUMBER: P 8875
The Association of Professional Engineers
Geologists and Geophysicists of Alberta

NO.	DATE	DESCRIPTION	BY	APP.
01	02-23-2015	ISSUED FOR REVIEW	JTH	
REVISIONS				

SCALE
HOR. 1:1000
VER. 1:100

DESIGNED BY
DKT

CHECKED BY
JTH

PROJECT No.
MDS0-001

DRAWN BY
DKT

DATE
APRIL 16, 2015

SE DESIGN AND CONSULTING INC.

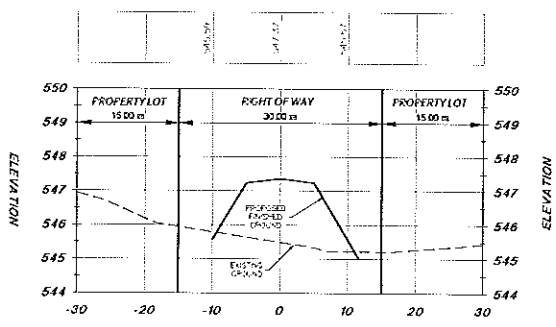
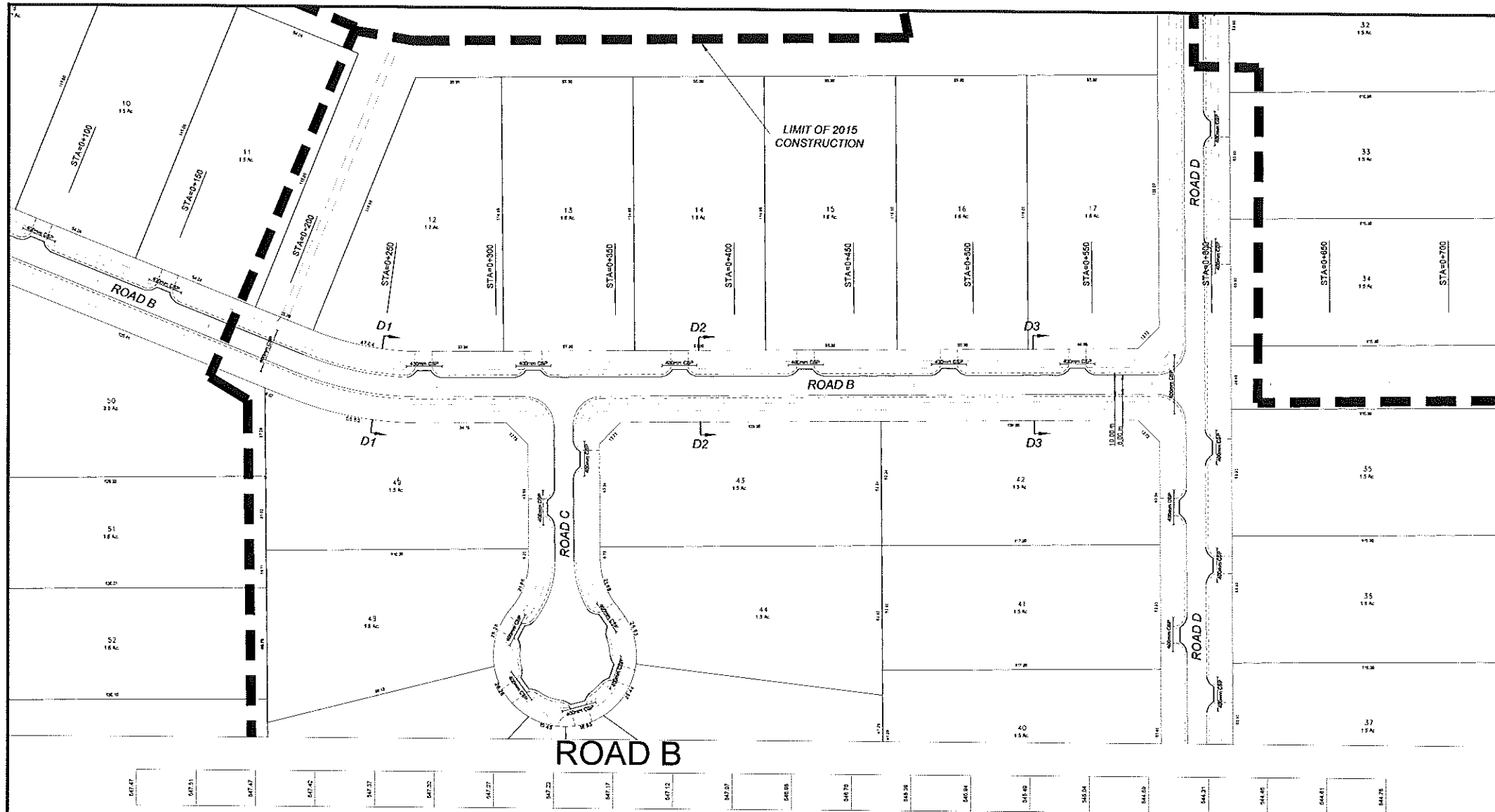
713 LAKESHORE DRIVE
COLD LAKE, ALBERTA
T9M 0C4

PH. (780) 564-5380
FAX. (780) 564-4456
www.se-design.ca

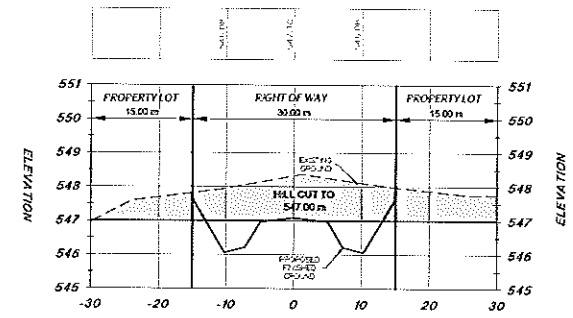
1416832 ALBERTA LTD.
FAIRWAY ESTATES
PHASE I

ROAD D PLAN PROFILE - STN 0+000 TO 0+500

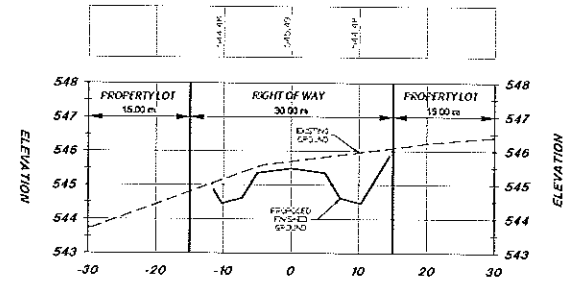
SHEET 4 OF 09 | DWG. No. 04



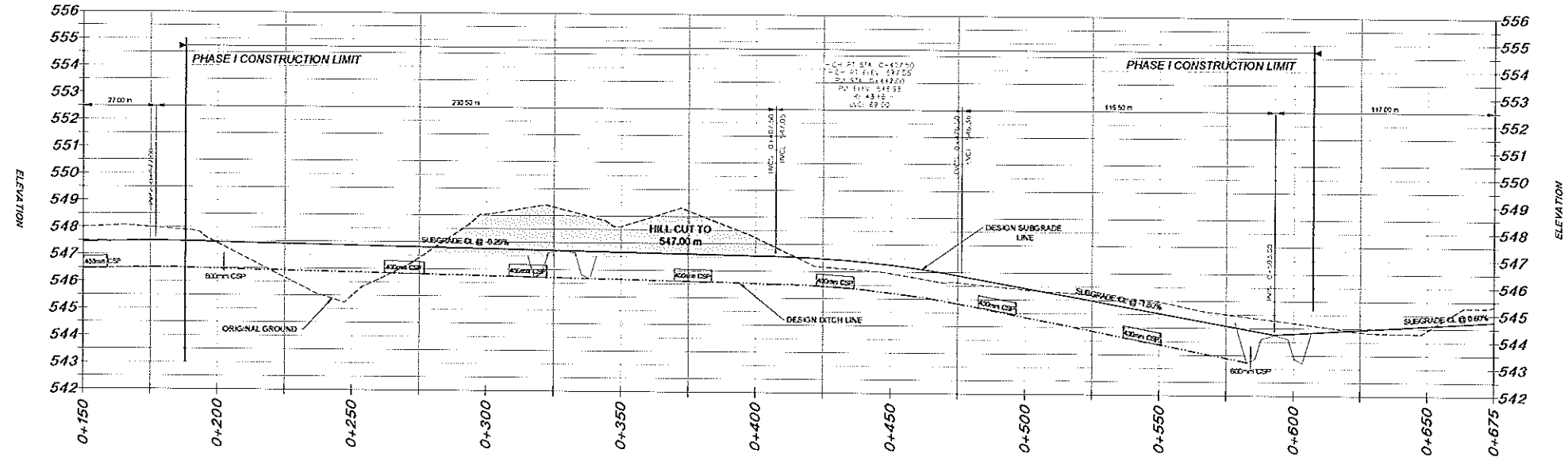
SECTION D1 - D1 STN 0+250
HOR. 1:500
VER. 1:50



SECTION D2 - D2 STN 0+385
HOR. 1:500
VER. 1:50



SECTION D3 - D3 STN 0+525
HOR. 1:500
VER. 1:50



LEGEND

- PROPOSED 400mm CSP
- Edge of Subgrade
- Bottom of Ditch

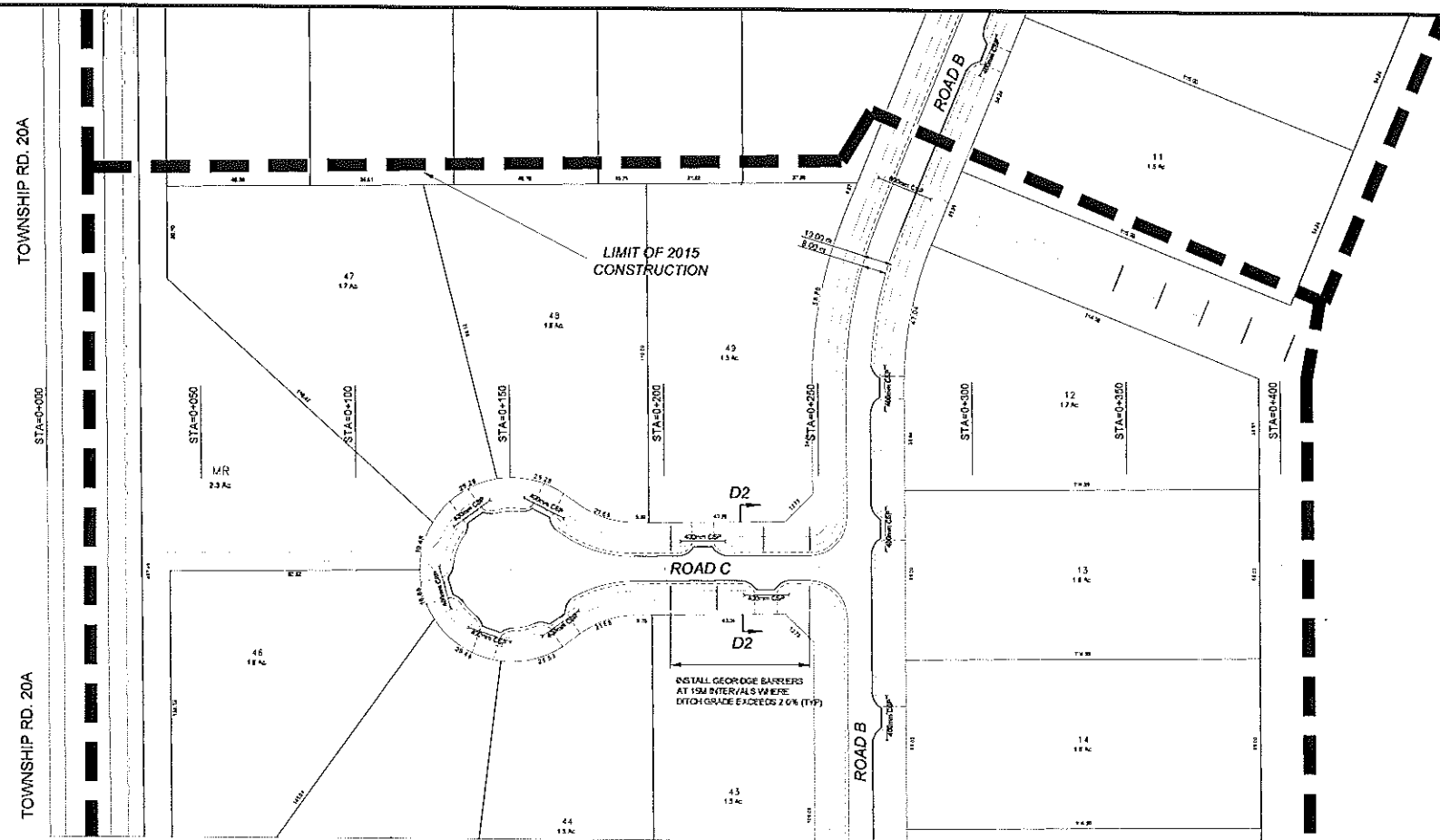
PERMIT TO PRACTICE
SE DESIGN AND CONSULTING INC.
S 314140
Date: 02-23-2015
PERMIT NUMBER: P 8875
The Association of Professional Engineers
Geotechnical and Foundation Engineers of Alberta

NO.	DATE	DESCRIPTION	BY	APP.
01	02-23-2015	ISSUED FOR REVIEW	JTH	
REVISIONS				

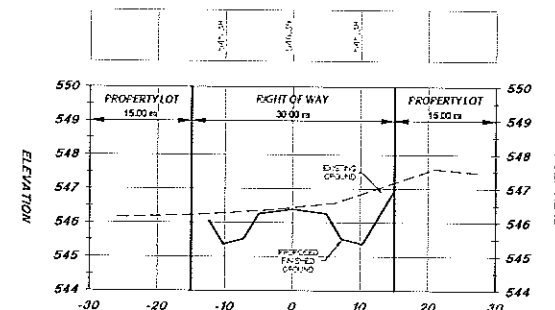
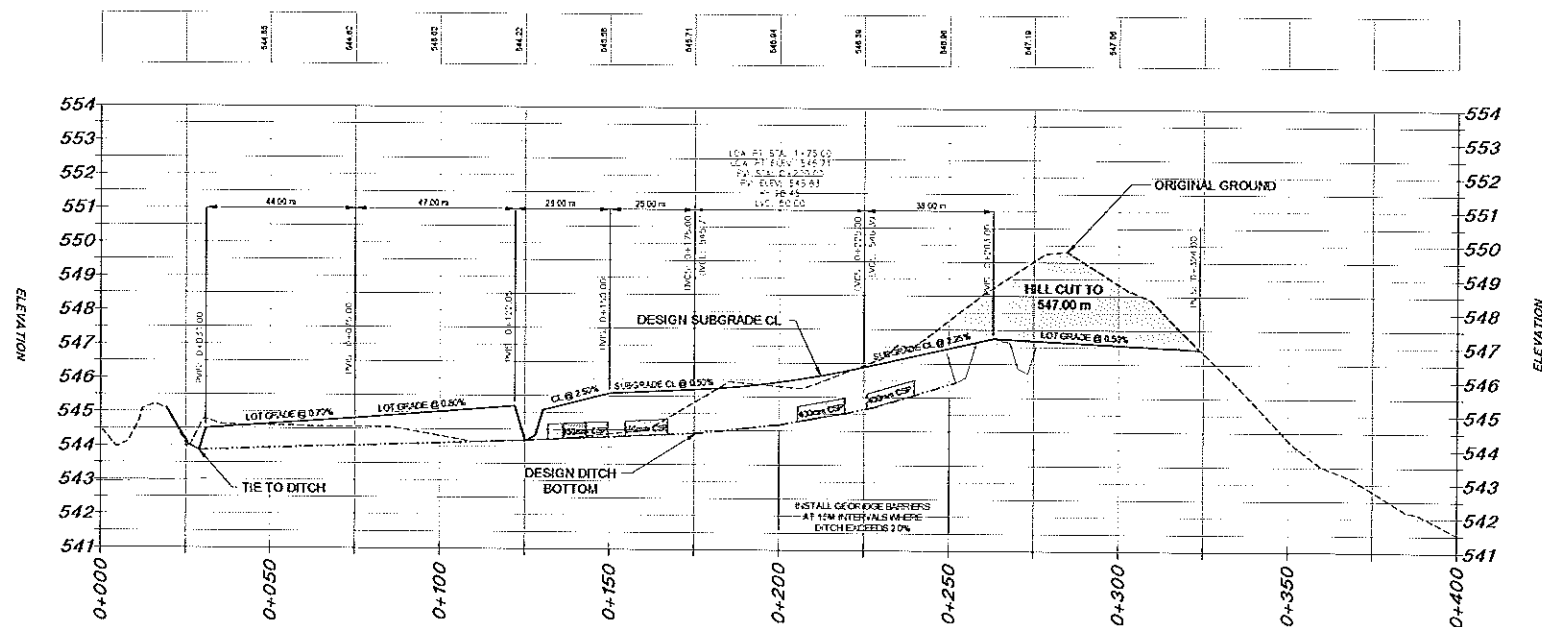
SCALE HOR. 1:1000 VER. 1:100	PROJECT No. MDS0-0001
DESIGNED BY DKT	DRAWN BY DKT
CHECKED BY JTH	DATE APRIL 16, 2015

SE DESIGN AND CONSULTING INC.
713 LANESHORE DRIVE
COLD LAKE, ALBERTA
T9M 0C4
PH: (780) 594-5350
FAX: (780) 594-4455
www.secsign.ca

1416832 ALBERTA LTD.
FAIRWAY ESTATES
PHASE 1
ROAD B PLAN PROFILE - STN 0+150 TO 0+675
SHEET 5 OF 09 | DWG. No. 05



ROAD C

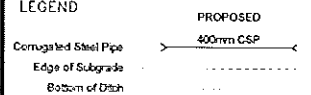


SECTION C - C STN 0+225
HOR. 1:500
VER. 1:50

NOTES:

1. NORTH AMERICAN GREEN S0150 EROSION CONTROL MAT TO BE INSTALLED WHERE DITCH SLOPES EXCEED 2.0% IN CONJUNCTION WITH GEORIDGE BARRIERS.
2. ALL CULVERT ROAD CROSSINGS TO BE RIP RAPPED AS PER DETAIL
3. FINAL LOCATIONS OF APPROACHES TO BE ADJUSTED IN FIELD TO SUIT GRADES AND ACCESS

LEGEND



PERMIT TO PRACTICE
SE DESIGN AND CONSULTING INC
S. Pratley
Date: _____
PERMIT NUMBER: P 8875
The Association of Professional Engineers
Geologists and Geophysicists of Alberta

NO.	DATE	DESCRIPTION	BY	APP.
01	02-23-2015	ISSUED FOR REVIEW	JTH	

SCALE
HOR. 1:1000
VER. 1:100
DESIGNED BY
DKT
CHECKED BY
JTH

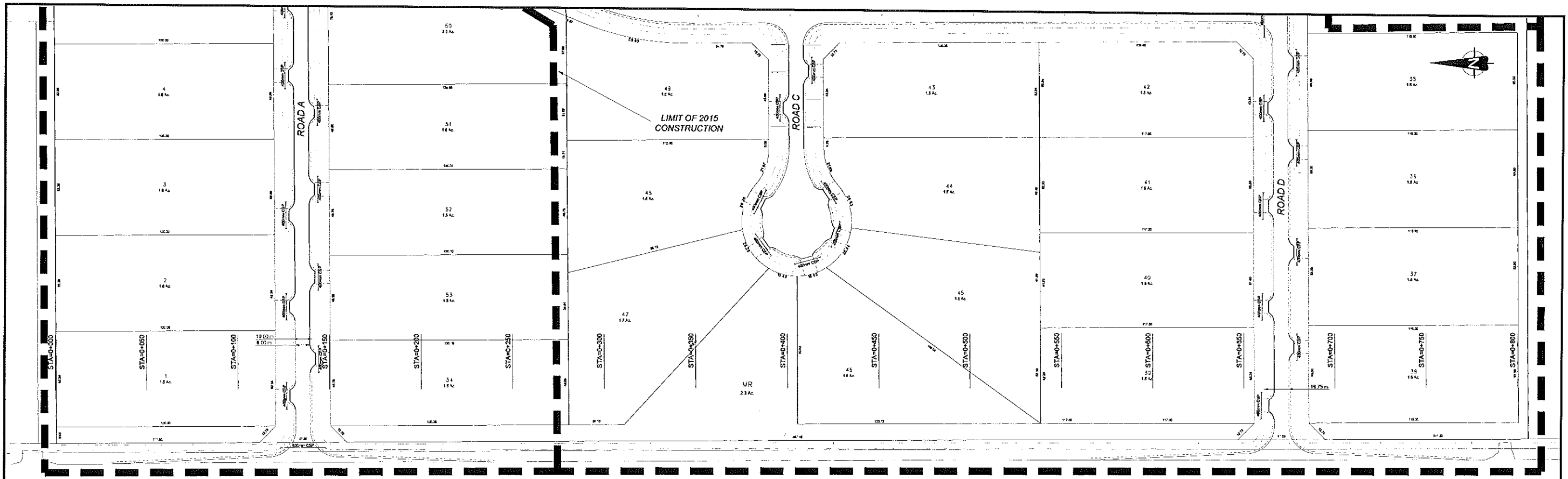
PROJECT No.
MDS0-0001
DRAWN BY
DKT
DATE
APRIL 16, 2015

SE DESIGN AND CONSULTING INC.

713 LAKE SHORE DRIVE
COLD LAKE, ALBERTA
T4M 0C4
PH. (780) 594-5300
FAX. (780) 594-4456
www.se-design.ca

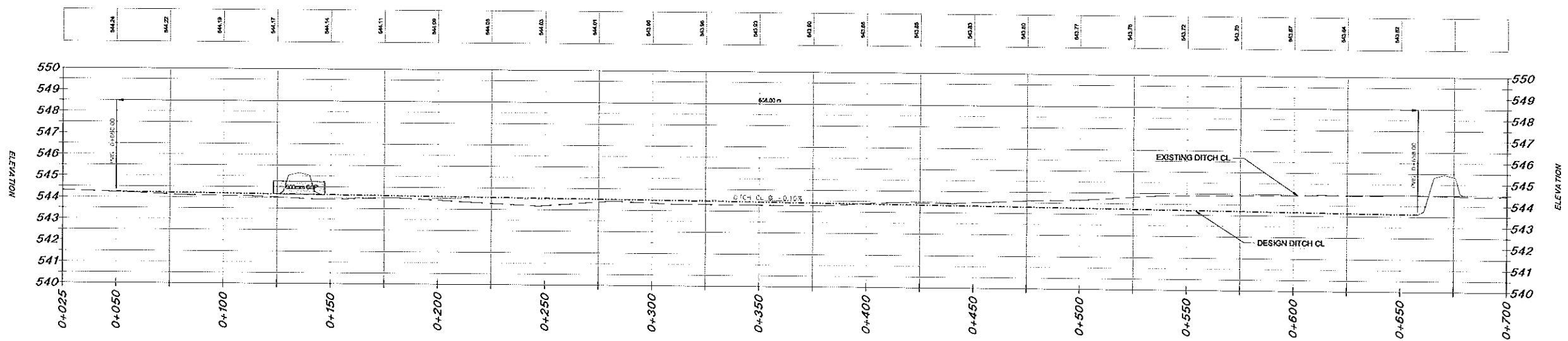
1416832 ALBERTA LTD.
FAIRWAY ESTATES
PHASE I

ROAD C PLAN PROFILE - STN 0+000 TO 0+400



TOWNSHIP RD. 20A

TOWNSHIP RD. 20A



LEGEND

PROPOSED
 Corrugated Steel Pipe ———→ 400mm CSP
 Edge of Sidewalk - - - - -
 Bottom of Ditch - - - - -

PERMIT TO PRACTICE
 SE DESIGN AND CONSULTING INC.
 Date: _____
 Permit Number: P 8875
 The Association of Professional Engineers
 Geologists and Geophysicists of Alberta

NO.	DATE	DESCRIPTION	BY	APP.
01	02-23-2015	ISSUED FOR REVIEW	JTH	
REVISIONS				

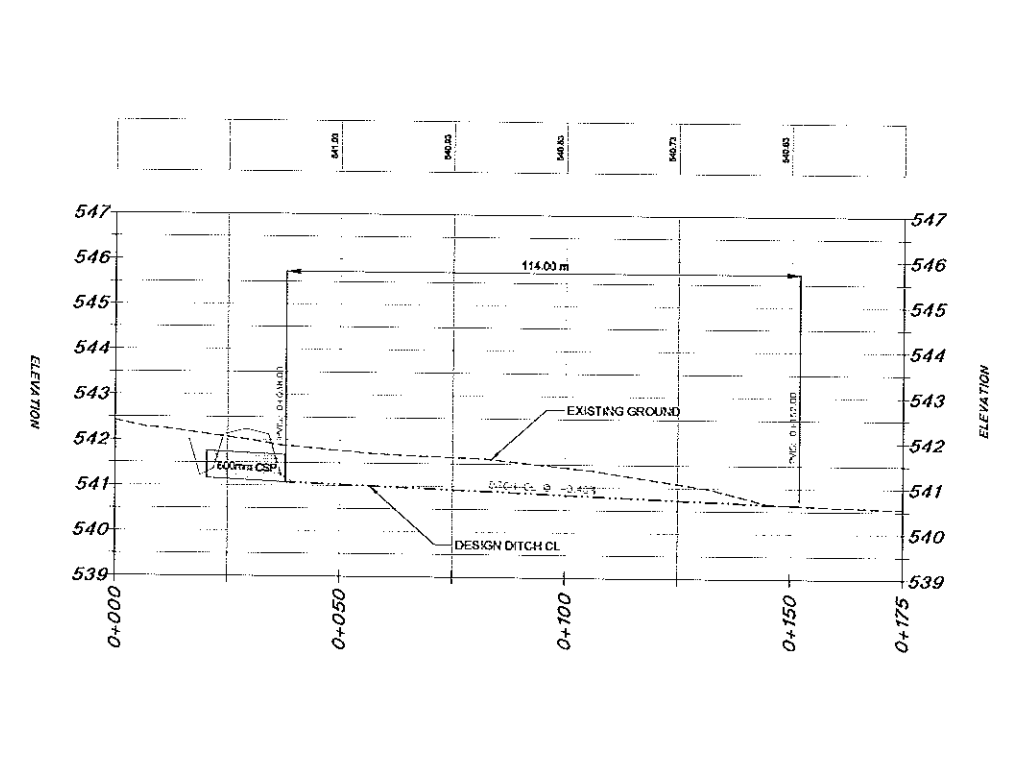
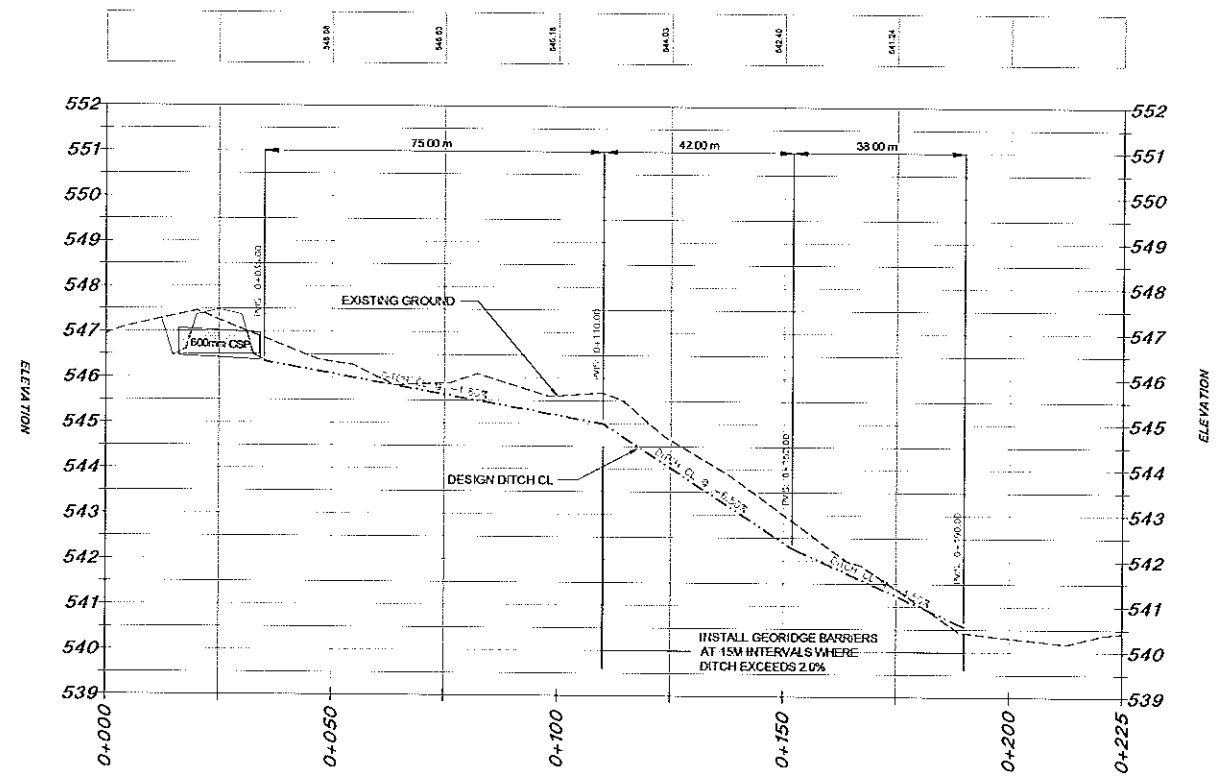
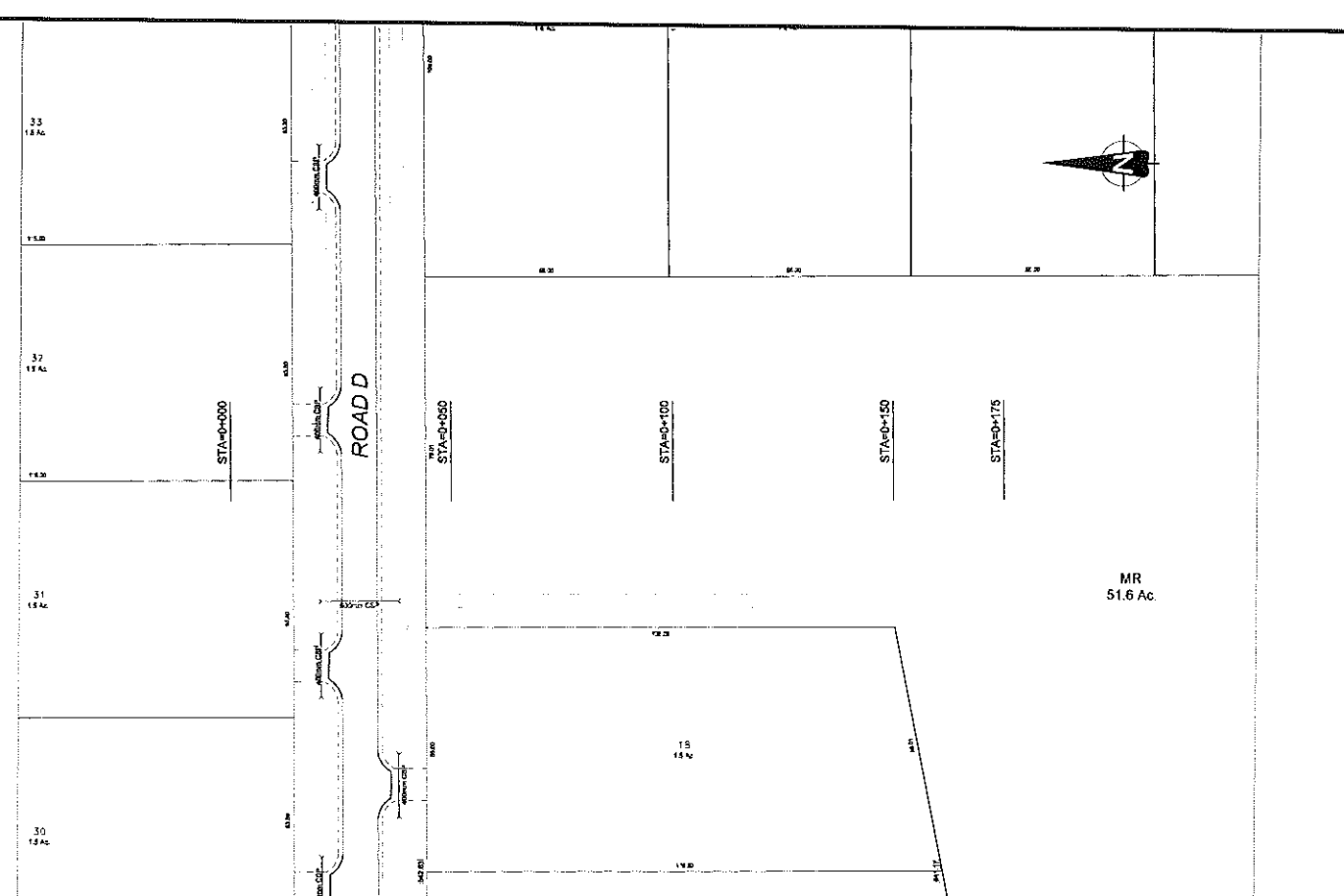
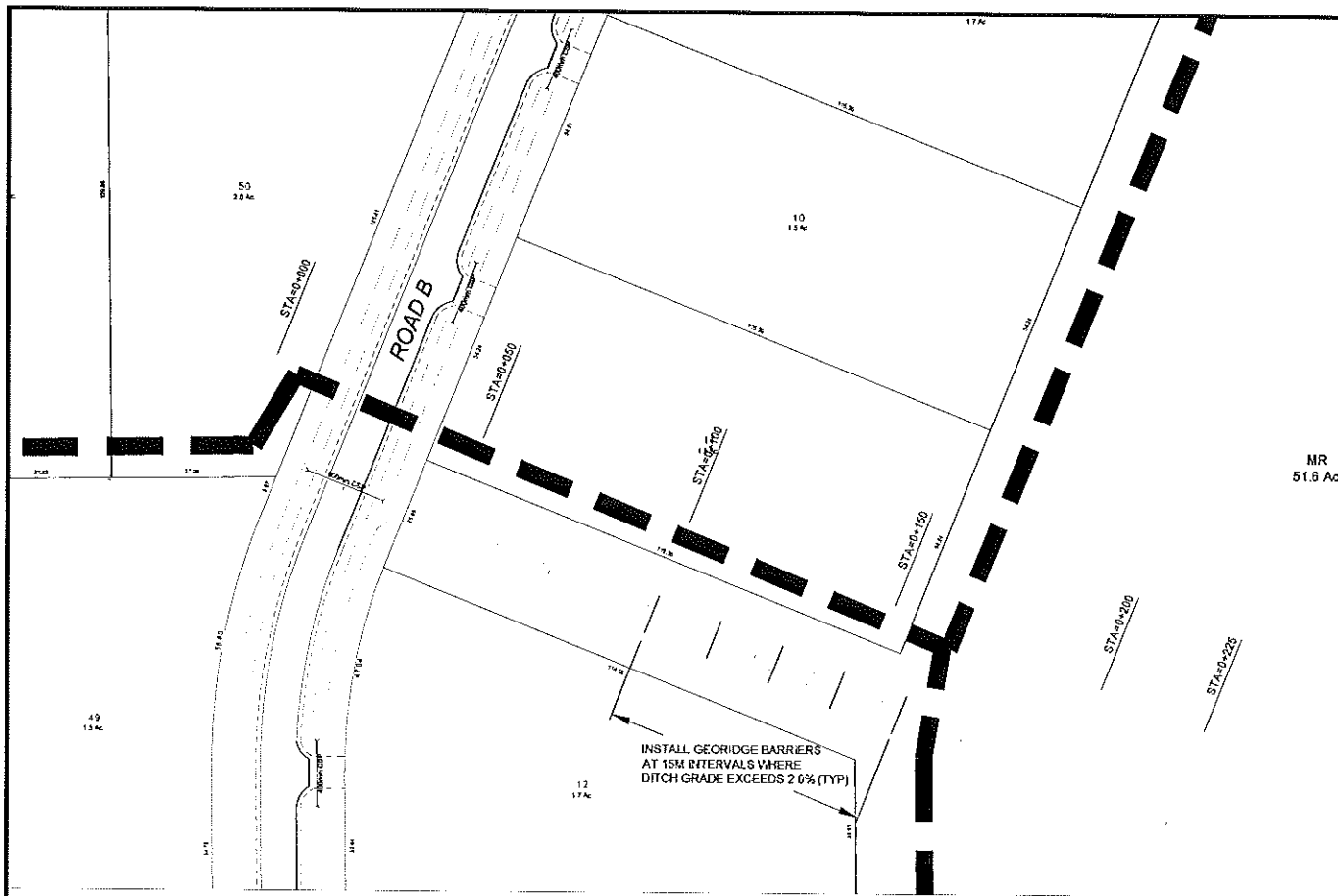
SCALE
 HOR. 1:1000
 VER. 1:100

DESIGNED BY: DKT
 CHECKED BY: JTH

PROJECT No.: MDS0-0001
 DRAWN BY: DKT
 DATE: APRIL 16, 2015



1416832 ALBERTA LTD.
FAIRWAY ESTATES
 PHASE I
 TOWNSHIP ROAD DRAINAGE DITCH PLAN PROFILE
 STN 0+025 TO 0+700



LEGEND

PROPOSED
 Corrugated Steel Pipe → 600mm CSP
 Edge of Subgrade - - - - -
 Bottom of Ditch - - - - -

PERMIT TO PRACTICE
 SE DESIGN AND CONSULTING INC.
 Signature: _____
 Date: _____
PERMIT NUMBER: P 8875
 The Association of Professional Engineers
 Geologists and Geophysicists of Alberta

NO.	DATE	DESCRIPTION	BY	APP.
01	02-23-2015	ISSUED FOR REVIEW	JTH	
REVISIONS				

SCALE
 HOR 1:750
 VER 1:100

DESIGNED BY
 DKT

CHECKED BY
 JTH

PROJECT No.
 MOSD-0001

DRAWN BY
 DKT

DATE
 APRIL 16, 2015



1416832 ALBERTA LTD.
FAIRWAY ESTATES
 PHASE I
 NORTH DRAINAGE DITCH PLAN PROFILE - STN 0+000 TO 0+225
 SOUTH DRAINAGE DITCH PLAN PROFILE - STN 0+000 TO 0+175

